

# CAPABILITY STATEMENT

On the web at [www.steppeo.org](http://www.steppeo.org)

## STEPPEO SUPPLY & CONSTRUCTION, INC.

### CORPORATE PROFILE

#### ILLINOIS

Corporate Headquarters  
3450 Ridge Road  
Lansing, IL 60438  
Phone 708-889-0940  
Fax 708-889-0941

Eileen Stepanovich, President  
[estepanovich@steppeo.org](mailto:estepanovich@steppeo.org)

Linda Olszewski, Manager  
[lolszewski@steppeo.org](mailto:lolszewski@steppeo.org)

#### INDIANA

120 Market Street,  
Suite 615  
Indianapolis, IN 46204  
Phone 317-423-0441  
Fax 317-423-0449

Branko Stepanovich,  
Safety Manager  
[bstepanovich@steppeo.org](mailto:bstepanovich@steppeo.org)

Debra Schmueser,  
Human Resources  
[dschmueser@steppeo.org](mailto:dschmueser@steppeo.org)

#### DBE/WBE CERTIFICATIONS

IDOT, CMS, City Chicago, WBENC, MWRDGC,  
State of Indiana, InDOT, PennDOT, State of Pennsylvania,  
MoDOT, WisDOT, WOSB

**DUNS NUMBER:** 148196178

#### WHO WE ARE

- Certified DBE/WBE Subcontractor
- Licensed in Illinois, Indiana, Wisconsin, Missouri and Pennsylvania
- Founded in 1981, Incorporated in 1989

#### WHAT WE DO

- Heavy and Road Construction
- Piledriving
- Earth Retention
- Tunneling
- Water, sewer line & related structures
- Precast & Prestressed Concrete
- Reinforcing Rebar Placement
- Misc. Concrete
- Drilling
- Caissons
- Blasting
- Helical Piers

#### AWARDS & HONORS

2000—Outstanding Design in Structural Steel—  
Medium Span Category: AISC and the National  
Bridge Alliance

#### ASSOCIATIONS

- Associated Steel Erectors
- Women Construction Owners & Executives
- Groundhog Club

### NAICS CODES

237110	Water & Sewer Line & Related Structures
237310	Highway, Street & Bridge Construction
237990	Other Heavy & Civil Construction—Tunneling
238110	Poured Concrete Foundation & Structures Constr
238120	Structural Steel & Precast Concrete Constr.
238910	Excavation Contractors
238990	All other Specialty Trades Construction

Signatory to the following unions: Chicago Laborers, Carpenters, Operators L-150, Cement Masons, Local 63 Ornamental Ironworkers, Local—1 Structural Ironworkers, Indiana Operators L-103, Indiana Laborers, Wisconsin Laborers, Wisconsin Operators, Wisconsin Piledrivers, NCEFR

Associated Steel Erectors  
119 E. Van Buren Street  
Elmhurst, IL 60126  
Phone 630.530.7560  
Fax: 630.530.2756  
[Info@AssociatedSteelErectors.org](mailto:Info@AssociatedSteelErectors.org)



# CLIENTS

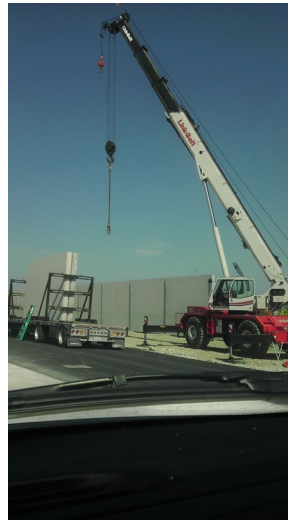


US Army Corps of Engineers

Illinois Department of Central Management Services



Illinois Department of Transportation  
Division of Traffic Safety



Soundwall—Ohare 9C-27C  
Completed 2012  
Owner: OMP/City of Chicago  
GC: Walsh Construction

Piledriving

Jefferson  
Elementary  
School—  
Berwyn, IL

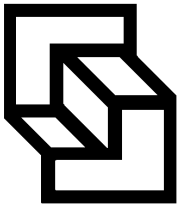
Completed:  
2013

Owner: Berwyn

GC: T&D Const.



Jet Blast Fence  
Ohare 10C-28C Center  
Completed 2013  
Owner: OMP/Chicago  
GC: Walsh Construction



**STEPPE SUPPLY & CONSTRUCTION, INC.**

3450 Ridge Road  
Lansing, IL 60438  
Phone (708) 889-0940  
Fax (708) 889-0941  
[www.steppe.org](http://www.steppe.org)



Launch Shaft/  
Cutterhead  
Deep Rock Tunnel  
Present  
Owner: Citizens Energy Group  
GC: S-K, JV

WE UTILIZE:

